

- This hike is subject to change pending the next Outback NA business meeting

March 17, 2012 **Butte Creek BLM Trail**
Level: 2 Moderate **Miles: 3**
Elevation gain: 200 feet **Host: Earl**
Speaker: TBA



There will be no Outback NA meeting for this hike so please attend the Breakfast Club meeting in Paradise, as NA's primary purpose is to carry the message to the addict that still suffers.

11:30am- Rendezvousing at Coffee's On (across the street from Cozy Diner)

Directions: From Chico Park and Ride to 6344 Skyway (Coffee's On) Start south on Hwy 99 for 1.5 miles- Exit 383 Paradise/Park Ave toward Paradise (the Skyway) stay straight on the Skyway for 11 miles 6344 on the Right across from the Cozy Diner. **12:00pm- Start Hiking-** The path stays close the creek, with several wide bridges and wooden stairs on the steepest upgrades. The vegetation changes as you pass over the soapstone formations with many chaparral plants. We may encounter people fishing or panning for gold.

March 31, 2012

Rattlesnake Fire Memorial Trail

Level: 2 Moderate **Miles: 3.5**
Elevation gain: 200 feet **Host: Francis**
Speaker: TBA



9:00am – Rendezvousing at 926 Sycamore St. Willows, CA at the Willows Unity Group Hall. Willows Unity Group will be providing coffee and sack lunches (donations) for hikers. **Directions to the Trailhead:** Take the State Highway 162 exit off Interstate 5 (from either direction), Go 21 miles west on State Highway 162, The road will come to a "T" intersection with a stop sign at Elk Creek, Turn right (this is still State Highway 162), Go 4 miles, Turn left (this is still State Highway 162), Go 4 miles, The road will come to a "Y" intersection with a National Forest boundary sign, The paved State Highway 162 continues to the left, The Alder Springs Road is the gravel road to the right, There is a turnout area to park vehicles here, Note: State Highway 162 is also called Forest Highway 7 from this point going west. **10:00am-** The Rattlesnake Fire site is located near the front country boundary of the Mendocino National Forest. This is where the Sacramento Valley meets the Coast Range mountains. A key geographic locating feature is Grindstone Canyon about 20 miles west of the city of Willows, California. On July 9, 1953, a brush fire was reported in Grindstone Canyon in the Mendocino National Forest. The Forest Service requested volunteers from the New Tribes Mission that was located about 25 miles south of the fire to help. That evening, the main fire was contained and 24 men were sent down into the canyon to put out a spot fire. As the crew sat down to eat their supper the wind shifted direction and the original fire jumped its line and started down the canyon. Fourteen firefighters from the New Tribes Mission and one Forest Service employee from the Mendocino National Forest lost their lives making it one of the deadliest in Forest Service history.

Go outback, not back out



Outback NA Meeting Schedule January 7- March 31, 2012
Every other Saturday at 10 AM (unless specified)

What is Outback NA?

Outback NA is a Narcotics Anonymous group that is part of the 916 North Area of Narcotics Anonymous. We are a group of recovering addicts who meet regularly to share the message of recovery. Instead of meeting in the same room each week, we meet all around the 916 North Area and out lying areas in beautiful settings. We have a different place each time. This meeting also sponsors day trips and camping weekends.

How difficult are the hikes?

Some hikes are a "walk in the library." Others are challenging even for experienced hikers. Because recovery depends on group unity, we make a special effort to stick together and make sure everyone completes the hike with a smile. We encourage each other as we walk, just like we do with the other challenges in recovery. Choose a hike that fits your ability. We rate the hikes on a scale of 1 to 5 to help you choose. **Level 1 - Easy.** A walk in the library. Level, only a few miles. Great for newcomers and members that haven't been walking much. Being outdoors and in the company of fellow addicts means everyone can have a good time. **Level 2 - Moderate.** A few more miles and some up and down. Still good for inexperienced hikers. **Level 3 - Challenging.** You'll probably be breathing hard at a few points because of the climb and/or extra miles. Most everyone can still do these hikes if they have willingness. **Level 4 - Hard.** Not recommended if you're new to hiking. Lots of elevation change and lots of miles. Guaranteed to give you a good workout along with the serenity of being outdoors in good company. **Level 5 - Very difficult.** Often we reserve these hikes for weekend retreats where we have more time to hike and relax. Get in shape before joining us on these hikes. And remember as you're wondering if you can make it to the top what you went through to get clean and how much better your life is today.

OUTBACK NA HIKE SUGGESTIONS

ALL HIKES ARE SCHEDULED TO LEAVE FROM THE TRAILHEAD PROMPTLY AT 10 AM.

(UNLESS SPECIFIED) PLAN ACCORDINGLY!

THE WEATHER CAN BE UNPREDICTABLE,

SO LAYERED CLOTHING MAKES SENSE FOR ALL HIKES.

BRING SOMETHING TO EAT DURING THE MEETING AND PLENTY OF WATER.

BRING ALONG SUNSCREEN OR A HAT FOR THE HOTTER, LESS SHADED TRAILS.

STAY ON THE TRAILS. PICK UP A TRAIL MAP BEFORE HEADING OUT.

FOLLOW ALL PARK RULES AND REGULATIONS.

WHAT YOU BRING IN, BRING OUT (THIS INCLUDES TRASH, FOOD, ETC)

IF YOU BRING YOUR CHILDREN, MAKE SURE TO KEEP THEM SUPERVISED AT ALL TIMES.

January 7, 2012

Sunrise at Sundial Bridge

Outback NA at TAC XII

Recovery Walk and JFT meeting

Level: 1.5 - Easy

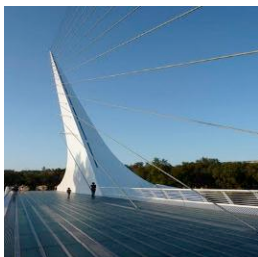
Miles: 1.5 Miles

Elevation gain: 0 feet

Host: Francis

Just for Today Meeting on the farside of the bridge

6:45am- Carpooling from Red Lion Inn Lobby 7:00am- Rendezvousing at Redding Convention Center From Red Lion Inn Drive North on Hilltop Drive. Go west on CA-44, Take exit 1 for Auditorium Drive. Toward Park Marina/Turtle Bay Park Turn Right onto Auditorium Dr/Sundial Bridge Dr. 10:00am- Start Hiking: In addition to being a functional work of art, the Sundial Bridge is a technical marvel as well. The cable-stayed structure has an inclined, 217 foot pylon constructed of 580 tons of steel. The deck is made up of 200 tons of glass and granite and is supported by more than 4,300 feet of cable. The structure is stabilized by a steel truss, and rests on a foundation of more than 115 tons of steel and 1,900 cubic yards of concrete. Following the Just for Today meeting members will explore the nature trails.



January 21, 2012

Ord Bend Trail

Level: 1.5 - Easy

Miles: 2

Elevation gain: 0

Host: Patsy

Speaker: Ajauna C. from Chico

10:00am- Rendezvousing at Ord Bend Boat Launch

Directions- The Ord Bend Park and Boat Launch Facility is located on the east bank of the Sacramento River at river mile 169 in the community of Butte City. The access road is located on the north side of State Highway 162 as the highway turns to the east at 8300 Highway 162 in Butte City. It connects with State Highway 45 three mile to the west, I-5 seventeen miles to the west, and State Highway 99 fifteen miles to the east.



February 4, 2012

Feather River Parkway

Level: 2 - Easy-Med Miles: 3.5 Miles

Elevation gain: 0 Host: Earl Spk: TBA

For those that have gone on the Brad Freeman Trail that goes from Oroville Dam to the Oroville Nature Center this hike continues from the Nature Center to River Bend Park. The paved path along the Feather River Parkway parallels the Feather River and offers a variety of birding experiences. Dress for cold weather we will have our meeting under one of the pavilions at River Bend Park. 9:30am- Rendezvousing at Oroville Park and Ride- directions from Chico: Start out going SOUTH on CA-99 S approx 11 mi go LEFT onto CA-149. 4.6 mi Take the CA-70 S ramp toward OROVILLE/MARYSVILLE. Stay STRAIGHT to go onto CA-70 S. 4.5 mi Take the NELSON AVE exit, EXIT 48, toward GRAND AVE. Stay STRAIGHT to go onto 4TH ST. 0.3 mi The Oroville Park and Ride parking is directly across the street from the Gas Station from the Gas Station on Grande Ave and 3rd Street.



Outback NA Snow Day

February 18 2012

Fun in the Snow Day with Breakfast Club, CUGNA and Outback NA

There will be no Outback NA meeting at this event so please attend the Breakfast Club meeting in Paradise as NA's primary purpose is to carry the message Ron R from Chico is speaking. 11:30am- **Rendezvousing at Coffee's On** (across the street from Cozy Diner) Directions: From Chico Park and Ride to 6344 Skyway (Coffee's On) Start south on Hwy 99 for 1.5 miles- Exit 383 Paradise/Park Ave toward Paradise (the Skyway) stay straight on the Skyway for 11 miles 6344 on the Right across from the Cozy Diner.

March 3, 2012 South Rim Trail

Lvl: 3.5 (6 miles) Elev. loss: 1200 ft downhill

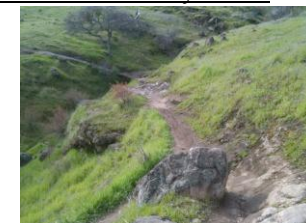
Host: Dennis

Speaker: TBA

9:30am Rendezvous at Chico Park and Ride

10:00am Start Hiking- A very scenic one-way down hill hike along the south side of Big Chico Creek. The South Rim or Annie Bidwell Trail starts at Historic Ten Mile

House where wagons in the 1860's heading east from Chico would stop to get water brought up from the creek on the road you'll be walking down. Directions: From Oroville: Montgomery St on Ramp to rendezvous point- Merge onto CA-70 N, 5.8 mi. Merge LEFT onto CA-149, 4.5 mi. Take the CA-99 N ramp toward CHICO, 0.3 mi, Stay STRAIGHT to go onto CA-99 N. 10.9 mi Chester Orland Exit at State Hwy 32 & State Hwy 99 Chico Park and Ride. From Orland: Hwy 32 and I-5 to rendezvous point- Start out going EAST on CA-32/COUNTY ROAD 200/NEWVILLE RD/WALKER ST/ CA-32 17.0 mi Turn LEFT onto W EAST AVE. 1.9 mi. Merge onto CA-99 S. 2.5 mi Chester Orland Exit at State Hwy 32 & State Hwy 99 Chico Park and Ride.



GRATEFUL TO BE OF SERVICE

GSR: Tim G. (AKA Earl) 990-5255

Treasurer: Patsy H. (530) 533-6671

Program/Outreach: Francis C. (530)354-0634 godstaxi@hotmail.com

Business Meeting Chair Person: Ron R. (530)519-9273

Business Meeting Sec/Carpooling: Dennis M. (530) 864-0978

Checkout our website: www.outbackna.com

God show us your will, guide us to new trails.....